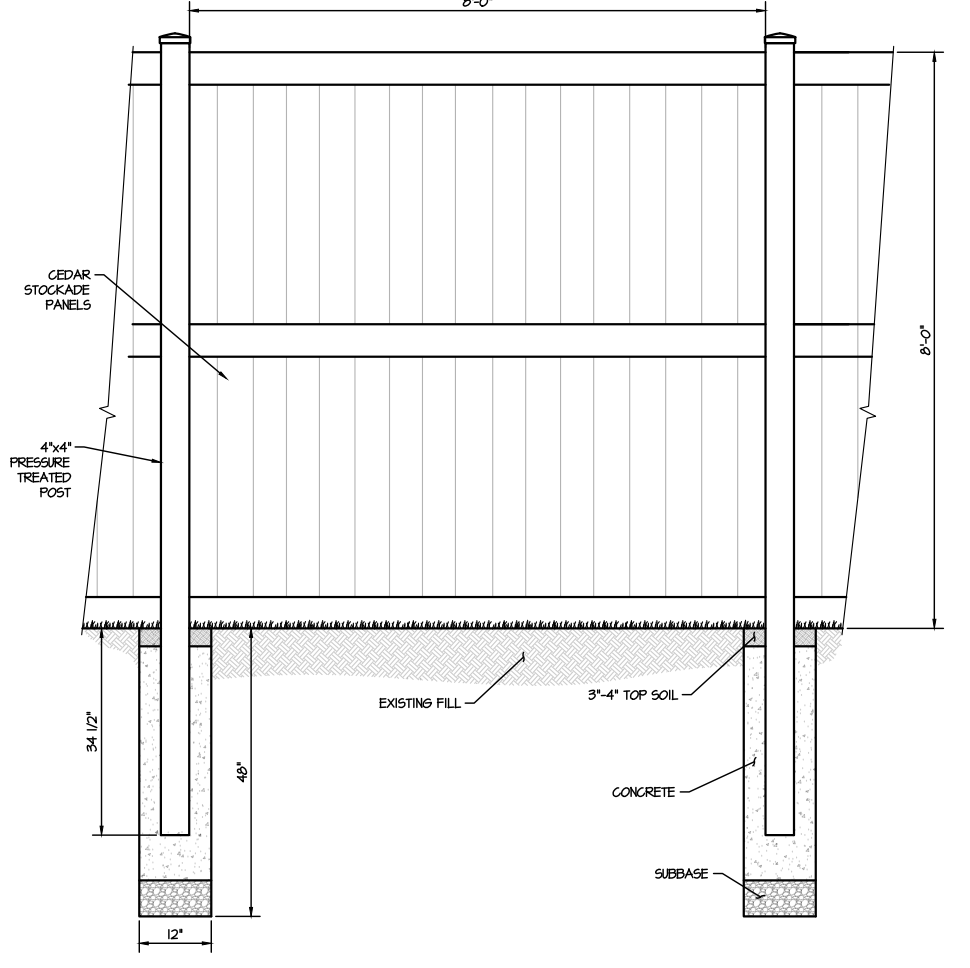
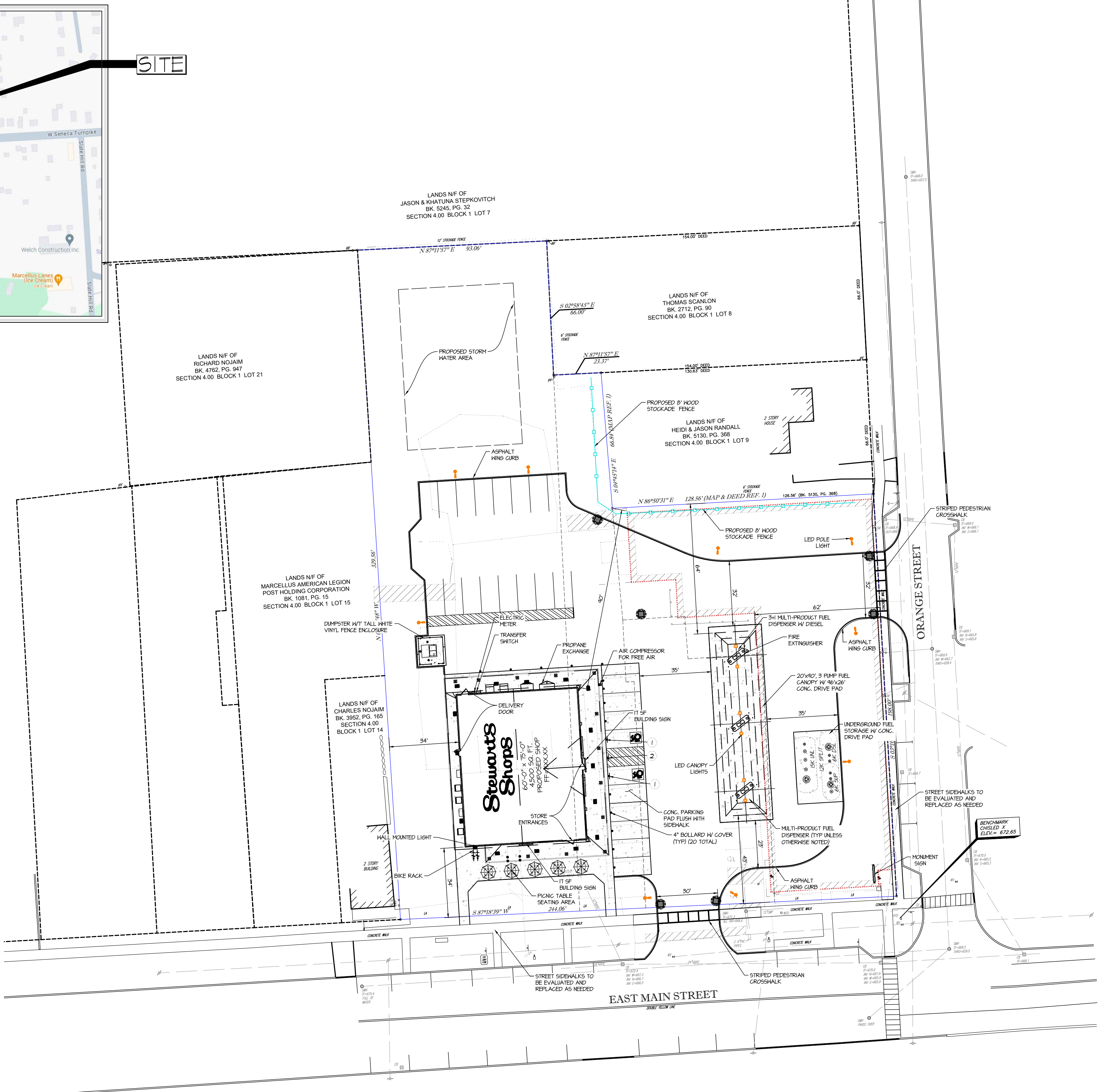


**SITE LOCATION MAP**  
SCALE: N.T.S.



**8' STOCKADE FENCE DETAIL**  
SCALE: 3/8" = 1'-0"

LEGEND	
PROPERTY LINE	---
FIRE HYDRANT	
WATER VALVE	
GAS VALVE	
SEWER MANHOLE	
SEWER CLEANOUT	
CURB INLET	
CATCH BASIN	
GUY WIRE	
UTILITY POLE	
SIGNPOST	
TRAFFIC SIGNAL CONTROL BOX	
POLE LIGHT	
WELL	
BOLLARD	
IRRIGATION SLEEVE	
OVERHEAD UTILITIES	--- OHW ---
WATER SERVICE, 1" TYPE "K" COPPER	--- W ---
SEWER SERVICE, 4" SDR 26	--- S ---
STORM PIPE, PROPOSED, HDPE	--- P ---
STORM PIPE, EXISTING	--- E ---
STOCKADE FENCE	--- SF ---
CHAINLINK FENCE	--- CL ---
SPLITRAIL FENCE	--- SL ---
U/G ELECTRICAL/TELE SERVICE	--- UE/UT ---
U/G ELECTRICAL CONDUIT	--- UE ---
U/G GAS LINE	--- G ---
U/G CAMERAL CONDUIT, SINGLE	--- CAM ---
U/G CAMERAL CONDUIT WITH GTY	--- CAM-2X ---
DIESEL PRODUCT LINE	--- DSL ---
SUPER PRODUCT LINE	--- SUP ---
UNLEADED PRODUCT LINE	--- UNL ---
EXISTING MAJOR CONTOUR	
EXISTING MINOR CONTOUR	
PROPOSED MAJOR CONTOUR	
PROPOSED MINOR CONTOUR	
PROPOSED SPOT ELEVATION	
EXISTING UNCHANGED SPOT ELEVATION	

**NOTES:**  
 1. SOME FEATURES IN LEGEND MAY NOT HAVE BEEN USED.  
 2. DARKER LINES INDICATE NEW WORK.  
 3. DOTTED LINES INDICATE REMOVED ITEMS.



**PROPOSED MONUMENT SIGN**  
SCALE: 3/8" = 1'-0"

LED DOWNLIGHTING ON BOTH SIDES AT PROJECTION AND ANGLE TO WASH DOWN SIGN FACE.

SIZE: 5'-0" x 7'-0" x 35 5/8" FT.  
 LETTERS: 1/8" FLEXIGLASS FACE ON 4-1/2" THICK CAN  
 ILLUMINATION: EXTERNALLY ILLUMINATED WITH DOWNLITE LED LIGHTING  
 - BURSARY LETTERS  
 - WHITE COLOR BACKGROUND  
 - 12" RED LED GAS PRICE NUMBERS  
 - 12" GREEN LED DIESEL PRICE NUMBERS

	STORE NAME, ABBREVIATION & NO. <b>MARCELLUS - MRC - 335</b>	
	SITE LOCATION <b>27 EAST MAIN STREET - MARCELLUS, NY 13108</b>	
	DATE	NO. REVISIONS
SARATOGA SPRINGS, NY 12866 TEL: (518) 581-1200 FAX: (518) 581-1209		DRAWN BY: MA SCALE: 1" = 30' DATE: 6-5-2024 DRAWING NO. <b>ZBA -1</b>
TITLE: <b>PROPOSED SITE PLAN - ZBA</b>		

ALTERATIONS TO THIS DOCUMENT BY OTHER THAN AN AUTHORIZED LICENSED PROFESSIONAL ENGINEER IS ILLEGAL AND A VIOLATION OF THE NEW YORK STATE EDUCATION LAW